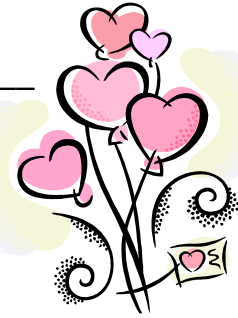


**Feb. 12-19, 2010**  
**Homework for Mrs. Renz & Mrs. Zistel**

Student \_\_\_\_\_ # \_\_\_\_\_

**Homework is due Friday Feb. 19**



**DATES TO REMEMBER:**

- Feb. 15 Mon. No School – Presidents’ Day
- Feb. 19 Fri. We DO have school / DQ Speeches students #18-25
- Feb. 25 Thurs. DQ Speeches students #26-30

	<b>TUESDAY</b>	<b>WEDNESDAY</b>	<b>THURSDAY</b>
<b>Reading</b> <i>Focus:</i> <i>Reader’s Purpose</i> (\$45)	Read 15 minutes. Read to determine what the author’s purpose is. Respond by stating the author’s purpose on the lines on the next page.	Read 15 minutes. Read to determine what the author’s purpose is. Respond by stating the author’s purpose on the lines on the next page.	Read 15 minutes. Read to determine what the author’s purpose is. Respond by stating the author’s purpose on the lines on the next page.
<b>Math</b> (\$30)	Comparing Fractions Using Number Lines p.28	The Fraction is Right p.7	Multiplication Timing – goal – finish all facts in 4 minutes
<b>Spelling #15</b> (\$25)	Write your spelling words once each in cursive.	Write the paragraph.	Take a practice test.
<b>Extra Credit</b> (\$2 each problem)	OPTIONAL: Math Problems of the Week #415 This is an extra credit challenge. Students may choose do as many problems as they can solve. Note that this is not required.		

**Parent Announcements:**

**Reminder: We DO have school this Friday. 😊**

**February Discovery Quest Speech Topics**

1. Discover where valentines came from. Why is it a "romantic" holiday. Write a special valentine's poem for a school helper. Share with the class, then plan to deliver the message!
2. Discover a famous African-American, past or present. Tell about his/her life and contributions.
3. Discover pioneers. Make a map of the Oregon Trail, or make a model of a prairie schooner, or draw your favorite explorer or pioneer. Tell us about your project and how it relates to pioneers.
4. Discover healthy eating. Plan a week's menu with your parent/guardian. Plan for 3 meals/day plus snack. Do a shopping list. Go shopping with your parent to see how much it costs!

<p>Mrs. Zistel 541-526-6400 x 4033 <a href="mailto:michelle.zistel@redmond.k12.or.us">michelle.zistel@redmond.k12.or.us</a> <u>.us</u></p> <p>Classroom website: <a href="http://www.mrsrenz.net">www.mrsrenz.net</a></p>	<p>Mrs. Renz 541-526-6400 x 4035 <a href="mailto:heather.renz@redmond.k12.or.us">heather.renz@redmond.k12.or.us</a> <u>.us</u></p> <p>Classroom website: <a href="http://www.mrsrenz.net">www.mrsrenz.net</a></p>
---	---

Yes, 😊 my child has completed **45** minutes (or more) of reading this week. Homework is worth \$100 “Collegiate Cash” ONLY WITH PARENT SIGNATURE. Late homework is worth \$0 money but will receive the regular homework grade.  
 Parent Signature \_\_\_\_\_

Reading response:

Tell the author purpose for writing the story.

Monday	Tuesday	Wednesday