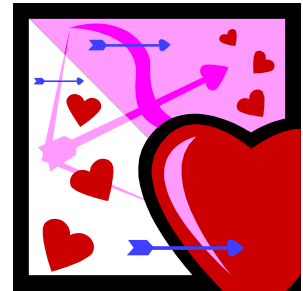


Feb. 5-11, 2010

Homework for Mrs. Renz & Mrs. Zistel

Student \_\_\_\_\_ # \_\_\_\_\_

Homework is due Thursday Feb. 11



**DATES TO REMEMBER:**

- Feb. 11 Thurs. Valentine's Party 3:30-4:10 PM / DQ Speeches students #10-17
- Feb. 15 Mon. No School – Presidents' Day
- Feb. 19 Fri. We DO have school / DQ Speeches students #18-25
- Feb. 25 Thurs. DQ Speeches students #26-30

	MONDAY	TUESDAY	WEDNESDAY
<b>Reading</b> <i>Focus:</i> <i>Comprehension</i> (\$45)	Read 15 minutes. Check for understanding. Your response can be to an adult out loud	Read 15 minutes. Check for understanding. Your response can be to an adult out loud	Read 15 minutes. Check for understanding. Your response can be to an adult out loud
<b>Math</b> (\$30)	Definition Match Study Link 1.6 page 231	Polygon Riddles Study Link 1.8 page 233	Multiplication Timing – goal – finish all facts in 4 minutes
<b>Spelling #14</b> (\$25)	Write your spelling words once each in cursive.	Write the paragraph.	Take a practice test.
<b>Extra Credit</b> (\$2 each problem)	OPTIONAL: Math Problems of the Week #414 This is an extra credit challenge. Students may choose do as many problems as they can solve. Note that this is not required.		

Parent Announcements:

The Wax Museum speeches were wonderful. Thank you for helping prepare your child so well. ☺ It was a great opportunity for students to practice their public speaking skills on a topic they know very well.

**February Discovery Quest Speech Topics**

1. Discover where valentines came from. Why is it a "romantic" holiday. Write a special valentine's poem for a school helper. Share with the class, then plan to deliver the message!
2. Discover a famous African-American, past or present. Tell about his/her life and contributions.
3. Discover pioneers. Make a map of the Oregon Trail, or make a model of a prairie schooner, or draw your favorite explorer or pioneer. Tell us about your project and how it relates to pioneers.
4. Discover healthy eating. Plan a week's menu with your parent/guardian. Plan for 3 meals/day plus snack. Do a shopping list. Go shopping with your parent to see how much it costs!

Mrs. Zistel 541-526-6400 x 4033 <a href="mailto:michelle.zistel@redmond.k12.or.us">michelle.zistel@redmond.k12.or.us</a>	Mrs. Renz 541-526-6400 x 4035 <a href="mailto:heather.renz@redmond.k12.or.us">heather.renz@redmond.k12.or.us</a>
Classroom website: <a href="http://www.mrsrenz.net">www.mrsrenz.net</a>	Classroom website: <a href="http://www.mrsrenz.net">www.mrsrenz.net</a>

Yes, ☺ my child has completed **45** minutes (or more) of reading this week. Homework is worth \$100 "Collegiate Cash" ONLY WITH PARENT SIGNATURE. Late homework is worth \$0 money but will receive the regular homework grade. Parent Signature \_\_\_\_\_